

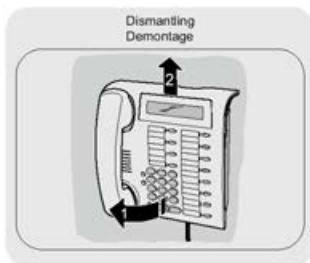
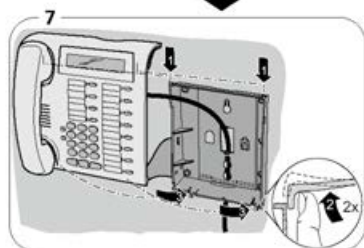
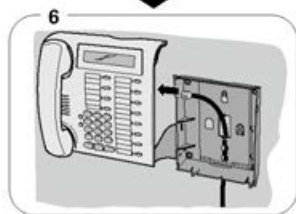
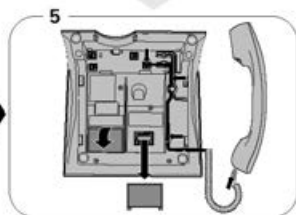
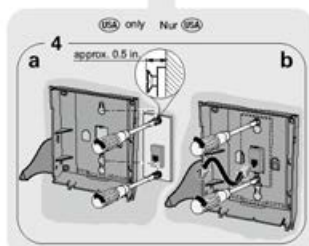
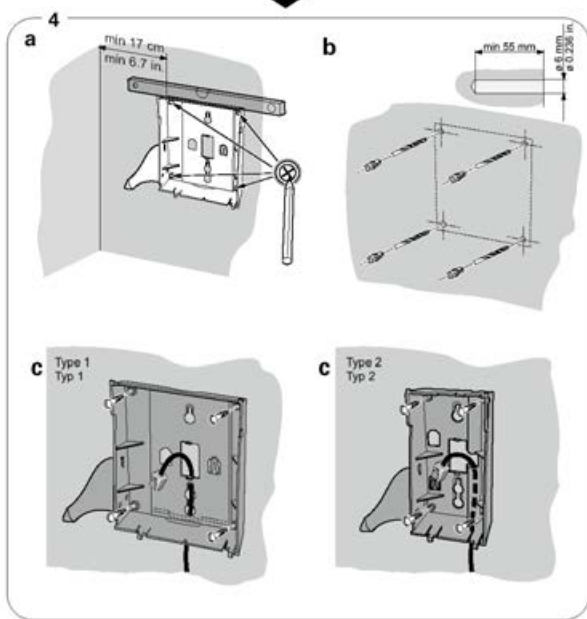
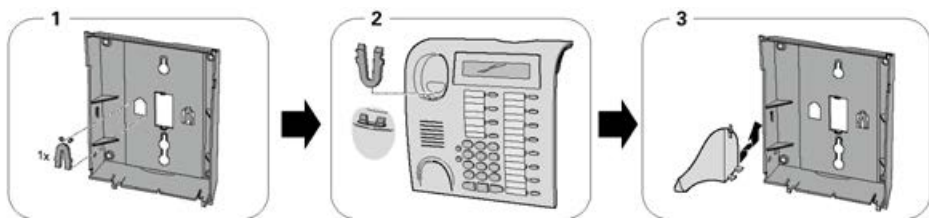


optiPoint

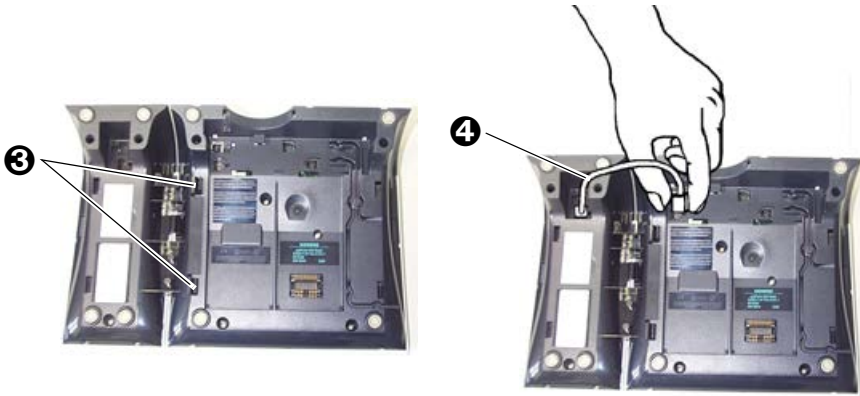
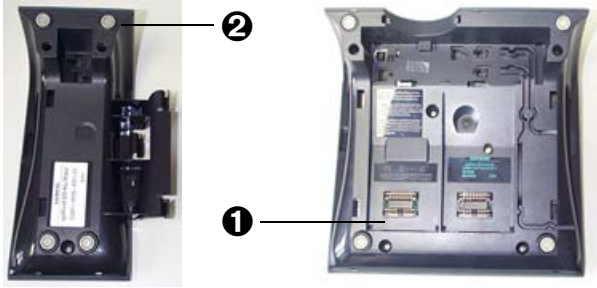
**Installation instructions for accompanying
equipment, adapters and accessories**

SIEMENS

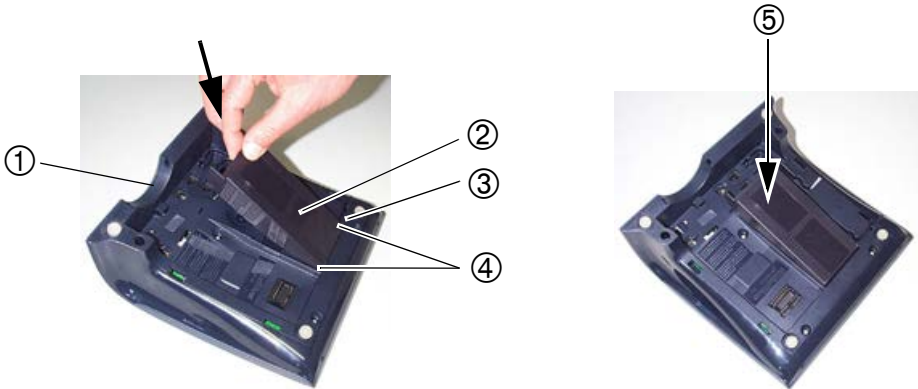
Global network of innovation



optiPoint key module / optiPoint BLF



optiPoint adapter



 **English****Add-on Devices**

optiPoint key module/optiPoint BLF
optiPoint acoustic adapter
optiPoint analog adapter
optiPoint Phone Adapter
optiPoint Recorder Adapter

Accessories

Active Speaker
Desk microphone
USB keyboard
Wall Mount Unit

optiPoint key module/optiPoint BLF



optiPoint BLF **cannot** be operated on the HiPath 4000 communication platform.

Safety Notes

The optiPoint telephones and add-on devices comply with the stipulated conformity and safety regulations (CE).

- Avoid exposing the equipment to direct sunlight or other sources of heat.
- Protect the equipment from moisture and liquids.
- Never insert objects into openings in the equipment.

Applications

The key module/BLF can be connected to the following telephones: optiPoint 600 office, optiPoint 500 advance/standard/basic, optiPoint 420 advance/standard, optiPoint 410 advance/standard, optiPoint 400 standard.

The key module/BLF enables you to assign functions to 16/90 additional function/name keys.

You can operate up to two key modules on your optiPoint, regardless of the type of telephone system.

A plug-type AC adapter may be required, depending on the configuration.

Package Contents

- 1 optiPoint key module/optiPoint BLF
- 1 connecting cable

Installation

For installation, see fold-out page 3 (Pos. ❶ to ❷).

1. Disconnect the subscriber line from the optiPoint telephone.
2. Place the telephone ❶ on a soft surface with the keypad facing down.
3. Mount the key module/BLF ❷ by snapping it into the slots ❸ on the telephone or on the installed key module.
4. Connect the key module/BLF and the optiPoint telephone or the key module with the supplied connecting cable ❹.
5. Attach the label sheets and the clear plastic cover to the key module/BLF.
6. Reconnect the subscriber line to the optiPoint telephone.

The optiPoint telephone and the optiPoint key module/BLF are ready for operation.

optiPoint acoustic adapter

Safety Notes

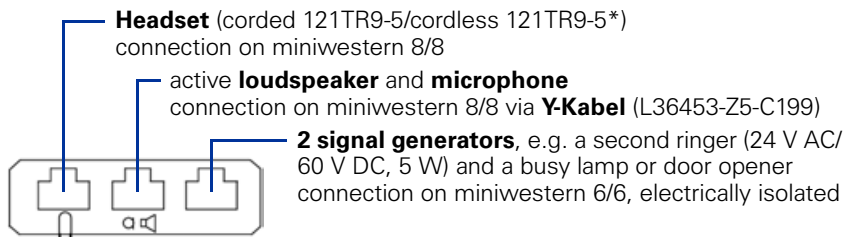
The optiPoint telephones and adapters comply with the stipulated conformity and safety regulations (CE).

- Avoid exposing the equipment to direct sunlight or other sources of heat.
- Protect the equipment from moisture and liquids.
- Never insert objects into openings in the equipment.

Applications

The acoustic adapter can be connected to the following telephones: optiPoint 600 office, optiPoint 500 advance/standard/basic, optiPoint 420 advance/standard, optiPoint 410 advance/standard.

The acoustic adapter has three ports for the following:



Package Contents

- 1 optiPoint acoustic adapter

Installation

For installation, see fold-out page 3 (Pos. ① to ⑥).

1. Disconnect the subscriber line from the optiPoint telephone.
2. Place the telephone ① on a soft surface with the keypad facing down.
3. Hold the adapter ② with the male connectors facing down and insert it into one of the two adapter bays on the bottom of the telephone by sliding the two tabs ③ into the two slots ④.
4. Gently press down on the adapter until the male and female connectors are completely joined ⑤.
5. You can now connect add-on equipment to the three ports on the back of the acoustic adapter (marked with the appropriate symbols).
6. Reconnect the subscriber line to the optiPoint telephone.

The optiPoint telephone and the adapter are ready for operation.

optiPoint analog adapter

Safety Notes

The optiPoint telephones and adapters comply with the stipulated conformity and safety regulations (CE).

- Avoid exposing the equipment to direct sunlight or other sources of heat.
- Protect the equipment from moisture and liquids.
- Never insert objects into openings in the equipment.

Applications

The optiPoint analog adapter can be connected to the following telephones: optiPoint 600 office, optiPoint 500 advance/standard/basic.

The analog adapter enables you to connect an additional telephone, fax machine, modem (e.g. a PC with an integrated modem card) or an answering machine with an analog interface and DTMF dialing.

In order to operate the connected analog telephone, the analog adapter needs an external plug-type AC adapter.

Only one analog adapter can be used with each $U_{P0/E}$ subscriber line.

Package Contents

- 1 optiPoint analog adapter

Installation

For installation, see fold-out page 3 (Pos. ① to ⑥).

1. Disconnect the subscriber line from the optiPoint telephone.
2. Place the telephone ① on a soft surface with the keypad facing down.
3. Hold the adapter ② with the male connectors facing down and insert it into one of the two adapter bays on the bottom of the telephone by sliding the two tabs ③ into the two slots ④.
4. Gently press down on the adapter until the male and female connectors are completely joined ⑤.
5. You can now connect the analog terminal to the 6-pin port on the back of the analog adapter (connecting a/b to pins 3 and 4).
6. Reconnect the subscriber line to the optiPoint telephone.

The optiPoint telephone and the adapter are ready for operation.

optiPoint Recorder Adapter

Safety notes

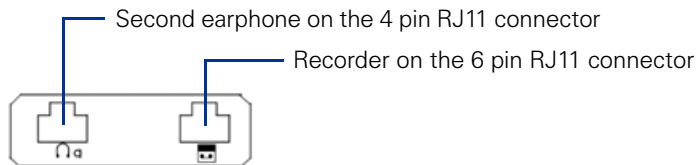
The optiPoint telephones and adapters comply with the stipulated conformity and safety regulations (CE).

- Avoid exposing the equipment to direct sunlight or other sources of heat.
- Protect the equipment from moisture and liquids.
- Never insert objects into openings in the equipment.

Applications

The recorder adapter can be connected to the following telephones:
optiPoint 600 office, optiPoint 500 advance/standard/basic,
optiPoint 420 advance/standard, optiPoint 410 advance/standard.

The recorder adapter has ports for the following:



Package Contents

- 1 optiPoint recorder adapter

Installation

For installation, see fold-out page 3 (Pos. ① to ⑤).

1. Disconnect the subscriber line from the optiPoint telephone.
2. Place the telephone ① on a soft surface with the keypad facing down.
3. Insert the adapter ② into one of the two adapter bays on the bottom of the telephone by sliding the two tabs ③ into the two slots ④ on the telephone.
4. Gently press the adapter in the direction of the arrow ⑤ until it is fully inserted into place.
5. Connect the second earphone and the recorder to the corresponding female connector(s) on the adapter.
6. Reconnect the subscriber line to the optiPoint telephone.

The optiPoint telephone and the adapter are ready for operation.

Active Speaker

Safety Notes

- Avoid exposing the equipment to direct sunlight or other sources of heat.
- Protect the equipment from moisture and liquids.
- Never insert objects into openings in the equipment.

Applications

The active loudspeaker can be connected alone or together with the desk microphone via the optipoint acoustic adapter (S30817-K7110-B508) and Y cable (L36453-Z5-C199) to the following telephones:

optiPoint 600 office, optiPoint 500 advance/standard/basic, optiPoint 420 advance/standard, optiPoint 410 advance/standard.

General

The active loudspeaker improves voice quality during open listening. The telephone's internal speaker is deactivated when the loudspeaker is connected. Open listening only takes place via the loudspeaker when you press the "Loudspeaker" key on the telephone.

The loudspeaker can be installed as a free-standing unit or wall-mounted on a bracket.

Package Contents

- 1 active loudspeaker with connecting cable (2 m)
- 1 plug-in power unit 230 V AC / 22 V AC with connecting cable (2 m)
- 1 plastic insert and 1 fixing screw for wall-mounting
- Installation instructions

Installation



Warning!

Only use the plug-in power unit supplied!

Prerequisite: the appropriate adapter is already correctly installed in the telephone.

1. Turn the **knob** on the front panel of the loudspeaker all the way to the **left** (lowest volume).
2. Insert the 8/8 Miniwestern plug of the Y cable into the **connection socket** of the adapter.
3. Insert the connection cable plug into the connection socket of the Y cable.
4. Insert the elbow plug supplied with the **plug-in power unit** into the round socket on the base of the loudspeaker.
5. To avoid acoustic feedback, **do not** set up the loudspeaker **facing the telephone or desk microphone**.
6. Insert the plug-in power unit in the **230 V socket**.
The **ready-status indicator** (LED) on the front panel of the loudspeaker lights up.
7. **Set base volume:**
The **knob** on the loudspeaker is only used to set the base volume that suits the room conditions. Once this is set, it should **not be changed**.

Procedure for setting the base volume:

- Set the **telephone loudspeaker** volume to the **lowest position** and save, see telephone operating instructions.
- Press the "Loudspeaker" key to activate open listening.
- Set the base volume (normal volume) using the dial tone, for example, or during a call with the knob on the loudspeaker.

Operation

The open listening function is activated and deactivated with the "Loudspeaker" key on the telephone. The current volume of the loudspeaker should be only changed (if necessary) with the keys "+" and "-" on the telephone.

Wall Mounting

1. Remove the **rear rubber foot** from the base of the loudspeaker.
2. Insert the supplied **plastic insert** into the opening.
3. The loudspeaker can be installed in an upright position on a mounting bracket (not included), for example, by means of the plastic insert and the supplied **screw**.

Note: plastic insert and screw are not suitable **for installing the unit directly on the wall (hanging position)!**

Technical data

Power supply:	Only via plug-in power unit supplied: L30460-X1325-X; for GB :L30460-X1325-X1 230 V AC +6%/-10% / 22 V AC; 50 Hz; connecting cable 2 m; elbow plug included
Power:	7 Watt
Frequency range:	100 Hz - 16 kHz
Input sensitivity:	250 mV (at full output)
Impedance:	10 k Ω
Connection cable:	2 m; with 4/4 Miniwestern plug
Dimensions:	160 x 98 x 95 (H x W x D, mm)
Weight:	approx. 500 g

Desk microphone

Safety Notes

- Avoid exposing the equipment to direct sunlight or other sources of heat.
- Protect the equipment from moisture and liquids.
- Never insert objects into openings in the equipment.

Applications

The desk microphone can be connected alone or together with the active loudspeaker via the optipoint acoustic adapter (S30817-K7110-B508) and Y cable (L36453-Z5-C199) to the following telephones:

optiPoint 600 office, optiPoint 500 advance/standard/basic, optiPoint 420 advance/standard, optiPoint 410 advance/standard.

General

The desk microphone improves voice quality in handsfree mode, e.g. in a conference. The telephone's internal microphone is deactivated when the desk microphone is connected. Handsfree mode is only activated via the loudspeaker when you press the "Loudspeaker" button on the telephone. The microphone can be installed as a free-standing unit. The optimum voice distance is 50 cm.

Package Contents

- 1 desk microphone with connection cable (2 m)
- Installation instructions

Installation

1. Insert the 8/8 Miniwestern plug of the Y cable into the **connection socket** of the adapter.
2. Insert the connection cable plug into the connection socket of the Y cable.
3. To avoid acoustic feedback, **do not** set up the desk microphone **facing the telephone or loudspeaker**.

Operation

The handsfree function is activated and deactivated with the "Loudspeaker" key on the telephone. The ready-status indicator (LED) on the upper side of the microphone lights up when the microphone is on – microphone active.

The microphone can be temporarily deactivated, as required, by pressing the Mute key – display unlit, e.g. for a private consultation in the room. The microphone is reactivated when the Mute key is released.

Technical data

Acoustic operating mode:	Pressure microphone
Frequency range:	100 Hz - 7 kHz
Characteristics:	Cardioid
Output impedance:	10 k Ω
Supply voltage:	3.8 V - 6 V DC; fed by adapter via connection cable
Current consumption:	max. 6 mA at 3.8 V and LED on
Connection cable:	2 m; with 4/4 Miniwestern plug
Dimensions:	25 x 68 x 77 (H x W x D, mm)

USB keyboard

Safety Notes

- Avoid exposing the equipment to direct sunlight or other sources of heat.
- Protect the equipment from moisture and liquids.
- Never insert objects into openings in the equipment.

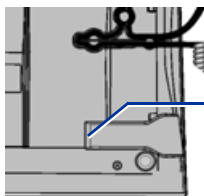
Applications

The USB keyboard can be connected to the following telephones: optiPoint 410 advance, optiPoint 420 advance, optiPoint 600 office.

With the USB keyboard, you can edit key label text, directory entries (optiPoint 420 advance only) and setup parameters for your optiPoint telephone.

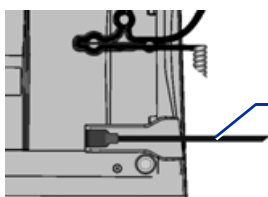
Installation

1. Disconnect the subscriber line from the optiPoint telephone.
2. Place the telephone on a soft surface with the keypad facing down.



The **USB port** (USB master) is on the lower right side of the baseplate.

3. Insert the plug on the USB keyboard's cord into the USB port.



Plug with cord for USB keyboard.

4. Reconnect the subscriber line to the optiPoint telephone.

The USB keyboard is ready for operation.

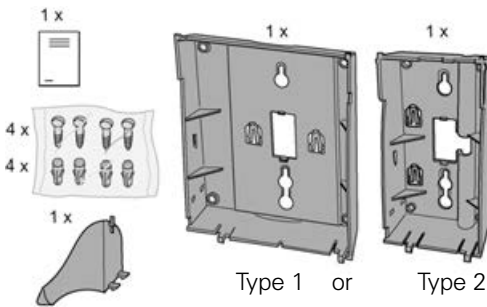
Wall Mount Unit

Safety Notes

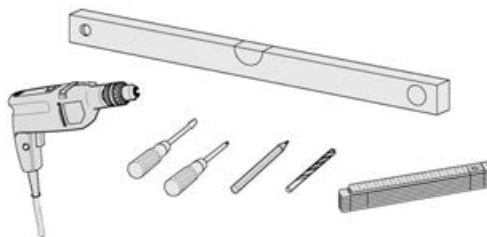
To assure problem-free operation, take the following factors into consideration while planning system installation.

- The telephone must be properly centered; take cable lengths into account.
- The telephone should be used in a well-ventilated area with temperatures between +5 °C and +40 °C, with a maximum humidity of 95%.
- Protect the equipment from liquids, flammable materials, excess dust, vibration and mechanical stress.
- The system should not be installed where it can be exposed to direct sunlight, dust, humidity, excessive heat or cold, or next to electric cables.
- Avoid proximity to data transmission equipment, electric soldering machines, copying machines, personal computers, and other electric equipment which may cause electric interference.
- Do not install inside cabinets.

Package Contents



Tools Needed



Installation

For installation, see fold-out page 3.

www.siemens.com/hipath



The information provided in this document contains merely general descriptions or characteristics of performance which in case of actual use do not always apply as described or which may change as a result of further development of the products. An obligation to provide the respective characteristics shall only exist if expressly agreed in the terms of contract. The trademarks used are owned by Siemens AG or their respective owners.

Siemens Communications
Hofmannstr. 51 • D-81359 Munich

Ref. No.: A31003-H8400-B934-9-6ZD1

Subject to availability. Right of modification reserved.
Printed in the Federal Republic of Germany.